

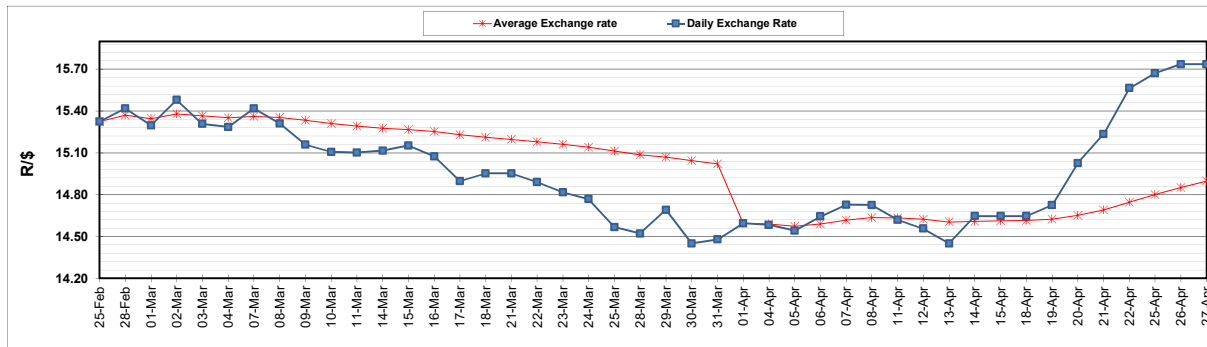
	PETROL 95 ULP	PETROL 93 ULP & LRP	DIESEL 0.05%	DIESEL 0.005%	ILL. PAR.
GAUTENG PUMP PRICE (SA c/l) AS FROM 06/04/2022	2,196.000	2,163.000	-	-	-
WHOLESALE PRICE (SA c/l) AS FROM 06/04/2022	-	-	2,101.440	2,123.840	1,584.688
SINGLE NATIONAL MAXIMUM RETAIL PRICE	-	-	-	-	2,045.000
BASIC FUEL PRICE - 27/04/2022 (SA c/l)	1,357.022	1,329.602	1,594.007	1,610.305	1,563.432
PRESS RELEASE CONTRIBUTION TO BFP 06/04/2022 - 27/04/2022 (SA c/l)	1,278.710	1,255.710	1,402.630	1,425.030	1,363.128
UNIT OVER/(UNDER) RECOVERY - 27/04/2022 (SA c/l)	(78.312)	(73.892)	(191.377)	(185.275)	(200.304)
AVERAGE BASIC FUEL PRICE 01/04/2022 - 27/04/2022	1,235.574	1,214.940	1,450.544	1,464.782	1,403.410
AVERAGE UNIT OVER/(UNDER) RECOVERY 01/04/2022 - 27/04/2022	14.961	13.859	(94.493)	(88.857)	(82.282)

ANALYSIS MOVEMENT OF AVERAGE OVER/(UNDER) RECOVERY

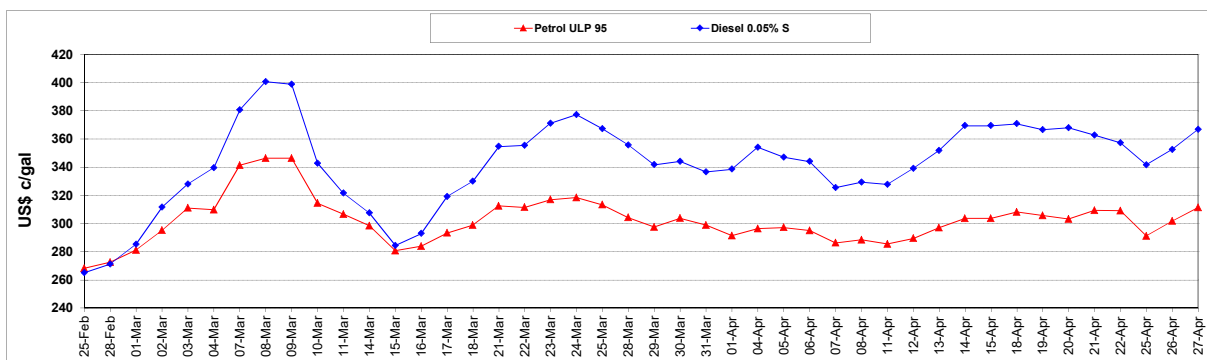
	PETROL 95	PETROL 93	DIESEL 0.05%	DIESEL 0.005%	ILL. PAR.
- MOVEMENT IN INTERNATIONAL PRODUCT PRICES	4.777	3.844	(106.449)	(100.931)	(93.850)
- MOVEMENT IN EXCHANGE RATE	10.184	10.014	11.956	12.074	11.568
AVERAGE UNIT OVER/(UNDER) RECOVERY 01/04/2022 - 27/04/2022	14.961	13.859	(94.493)	(88.857)	(82.282)

R/\$ EXCHANGE RATE - (R/\$15.7355 - 27/04/2022)

EXCHANGE RATE USED IN BASIC FUEL PRICE



INTERNATIONAL PRODUCT PRICES OF BASKET USED IN BASIC FUEL PRICE



BASIC FUEL PRICE IN SA CENTS PER LITRE

